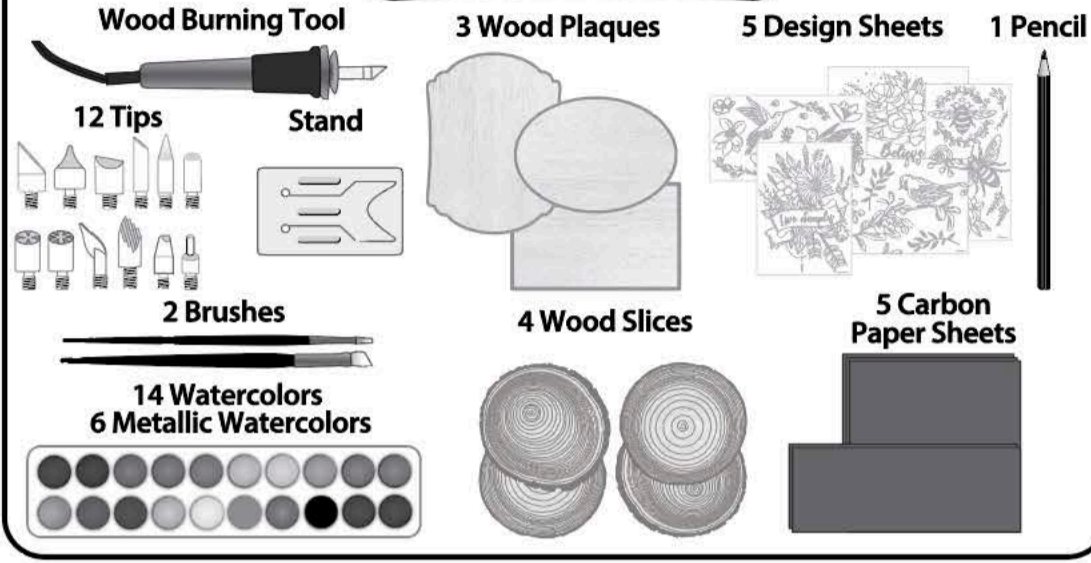


# WOOD BURNING

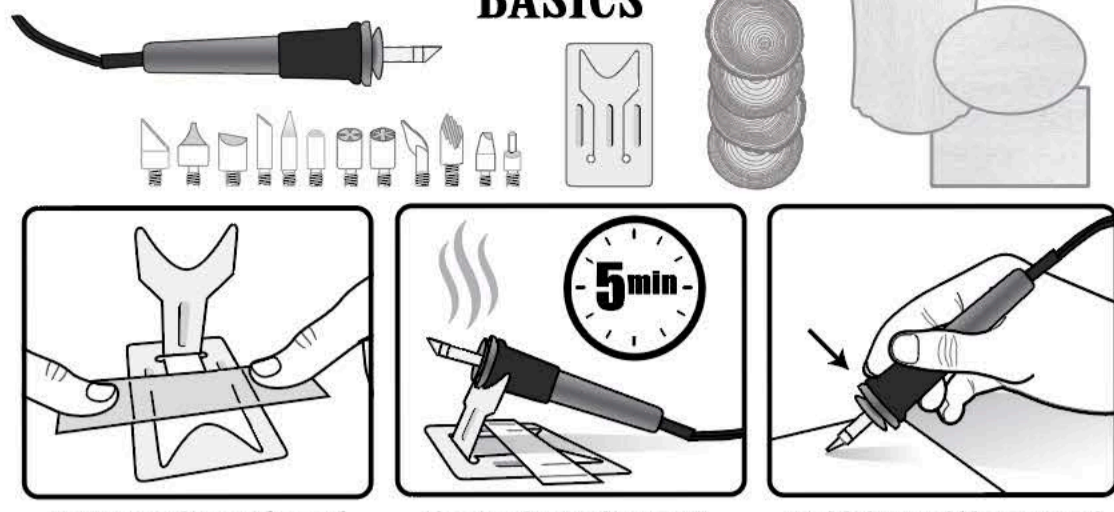
· DESIGN STUDIO ·

## INSTRUCTIONAL GUIDE \*Read All Instructions Before Use!

### WHAT'S INSIDE



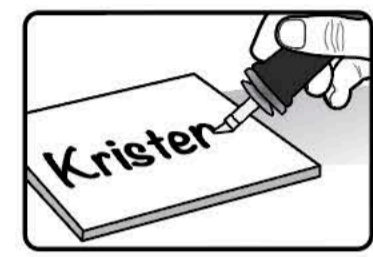
### BASICS



Tape stand to surface of your workspace. Remember to protect work surface with heat-resistant cover.

Plug tool's cord into AC outlet and allow 5 minutes to heat. Always rest tool on stand when not in use.

Hold the tool like a pencil. Keep your fingertips behind the guard to prevent burns.



**\*TIP:** When starting a project, test the wood and the tips by writing your name on the back of the selected wood. You can feel how the wood will respond to the heat and tips.

**WARNING – TIP IS HOT!**  
Can reach temperature of 716° F (380° C).  
Do not use directly on paper design sheets or plastic stencil sheet.

### WOOD BURNING TIPS

	<b>Stripe Tip:</b> Make straight lines with ease.		<b>X Stamp:</b> Create perfect X patterns.
	<b>Detail Tip:</b> Perfect for small areas and detail.		<b>Asterisk Stamp:</b> Create perfect asterisk patterns.
	<b>Broad Stroke:</b> Great for shading large areas.		<b>Shading Stroke:</b> Shade using broad strokes.
	<b>Angled Tip:</b> Works with shading.		<b>Texture Stroke:</b> Add flawless shading.
	<b>Soldering Stroke:</b> For making fine details.		<b>Calligraphy Stroke:</b> Perfect for lettering.
	<b>Fine Detail Tip:</b> Perfect for very fine details.		<b>Flow Tip:</b> Perfect for curved designs.

**WARNING TIP IS HOT!**

Wait approximately 10 minutes for tip to cool before removing from the tool. For extra precaution, wear protective heat-resistant gloves.

Carbon will build up on the tips as you work. Use fine grit sandpaper or wire brush to gently clean while the tips are cool.

### TRACING/TRANSFERRING STEPS

**For This Step You Will Need:**

**You Will Also Need: (Not Included)**

**STEP 1**

Place design sheet on the wood plaque and tape down top edge. Lift design and place carbon paper underneath.

**STEP 2**

Begin tracing over lines and shapes with pencil. Lift sheets to check on progress before removal.

**\*TIP:** Use a ruler for straight lines.

**PERSONALIZE IT!**

When finished, remove the design and carbon paper. For personalization, write in your own words.

**VISIT [WWW.ARTSKILLS.COM](http://WWW.ARTSKILLS.COM) FOR ADDITIONAL FREE DOWNLOADABLE PROJECTS**

### WOOD BURNING TECHNIQUES

**Tips To Use:**

Trace your design to ensure accurate outlines. Moving slowly, try to burn in as few strokes as possible. For large curves, try moving both your hand and piece of wood for softer lines. Don't be afraid to take your time.

**Tips To Use:**

Use a larger, flatter tip. Fill using soft circular motions and slowly darken each area.

**\*TIP:** Be careful not to apply heat too long to wood. If wood begins smoking, cease burning until wood cools.

**Tips To Use:**

Using your texture stroke to make consistent lines, start drawing in one direction. To crosshatch, make another set of lines diagonally overlapping the first set of lines in the opposite direction. For more control, you can do this with a thin tip as well.

### WATERCOLOR WASH TECHNIQUES

**For This Step You Will Need:**

**You Will Also Need: (Not Included)**

**Make sure the surface is clean. Remove any pencil lines with a white eraser. Wipe any dirt or dust from surface.**

**Wet watercolor paints with water to reach desired consistency. You can fill in shapes, paint around lines or apply washes to the whole piece.**

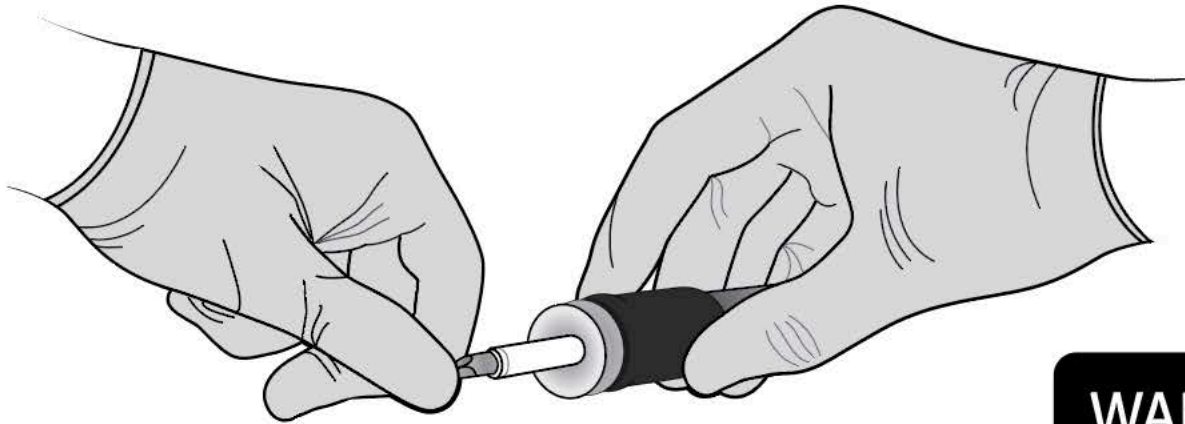
**\*TIP:** Test out your colors and technique on a piece of scrap material before applying to the whole piece.

**If you want richer color, add more layers. Use metallic paints to give your artwork a shimmering effect!**

Try different brush sizes, dry times and color mixtures to make the most of your wood burning craft.

## WARNING: READ BEFORE USE!

- **DO NOT** remove tip while tool is hot.
- **WAIT 10 MIN** for tool to cool before removing tip.
- **DO NOT** use pliers or any other tool to remove tip. Tip will break or threads will become stripped.



**WARNING  
TIP IS HOT!**

Before use, please scan  
**QR Code** to learn how  
to stay safe while using  
the wood burning tool.



**SCAN QR CODE!**